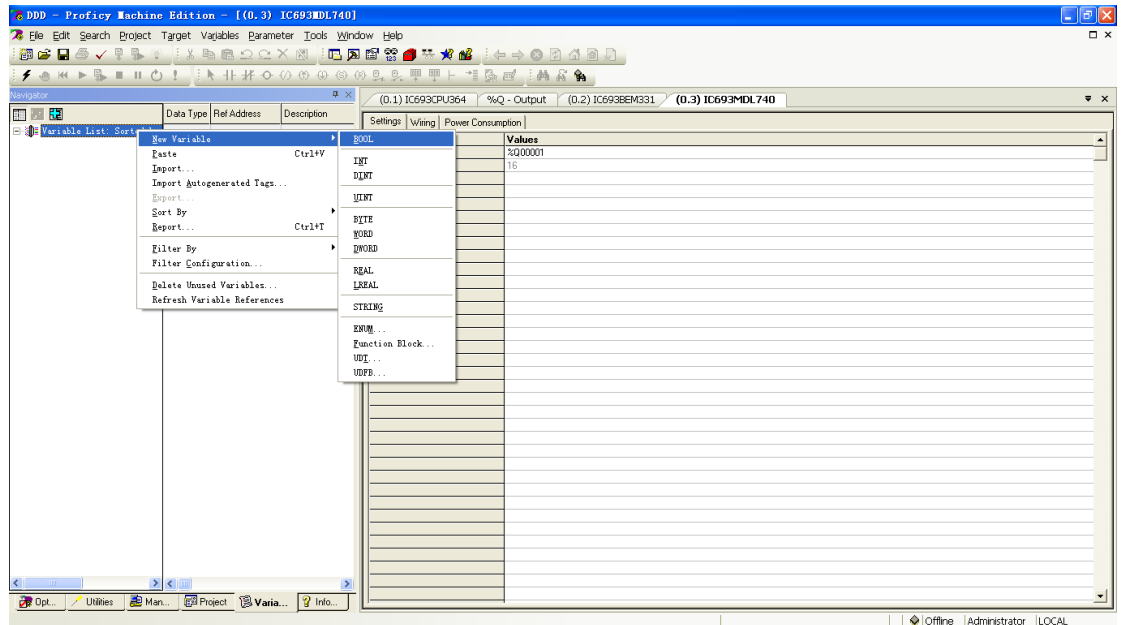
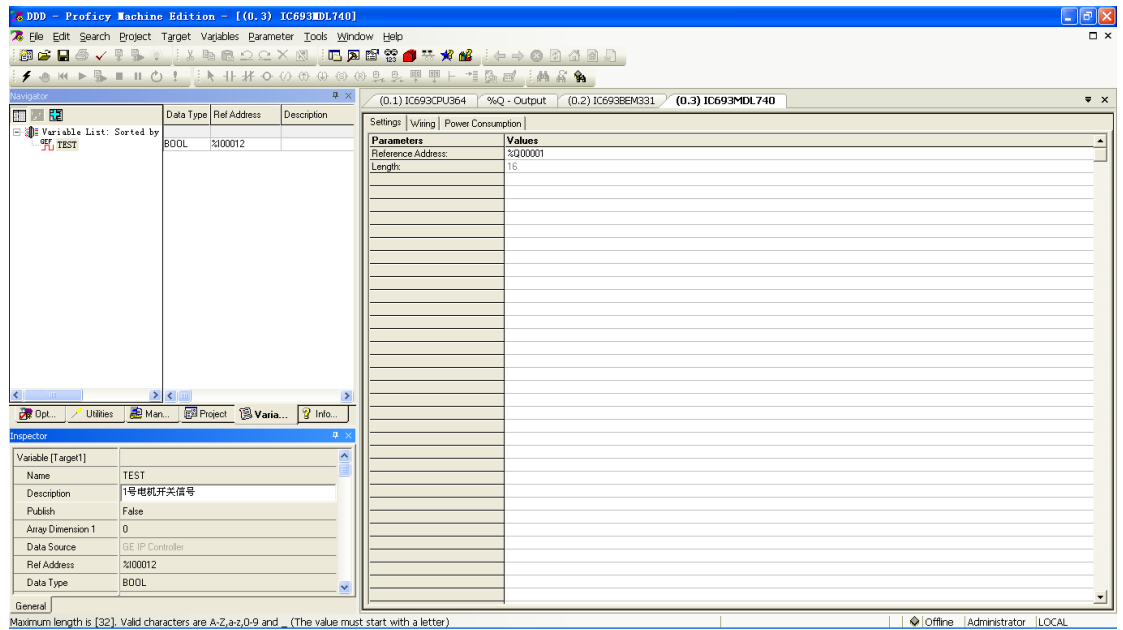


ME 软件变量表的导入导出

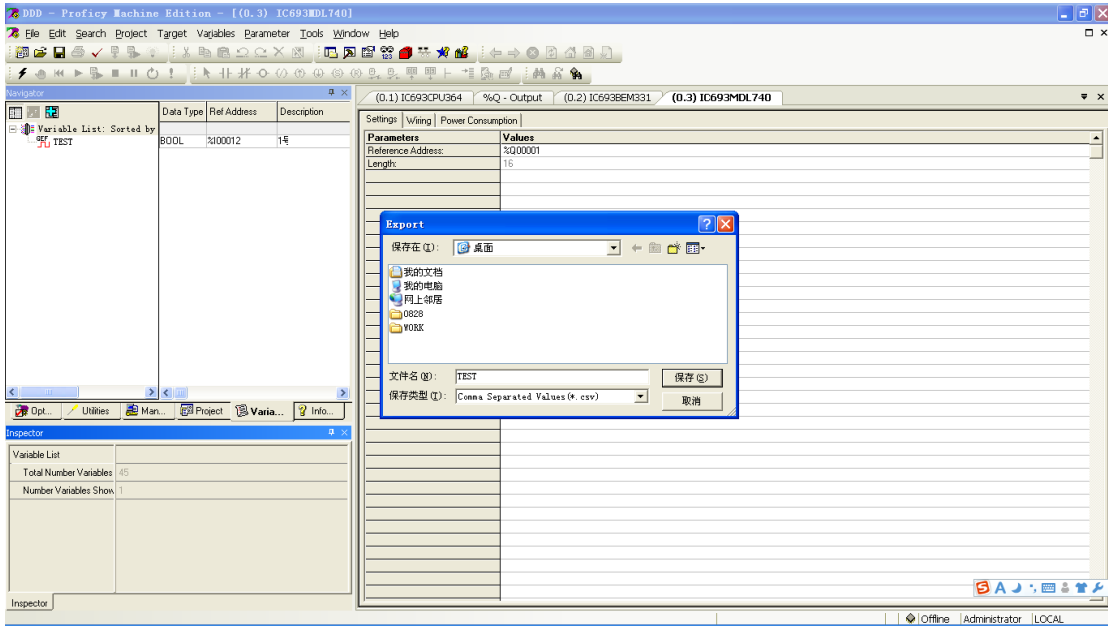
(1) 新建变量



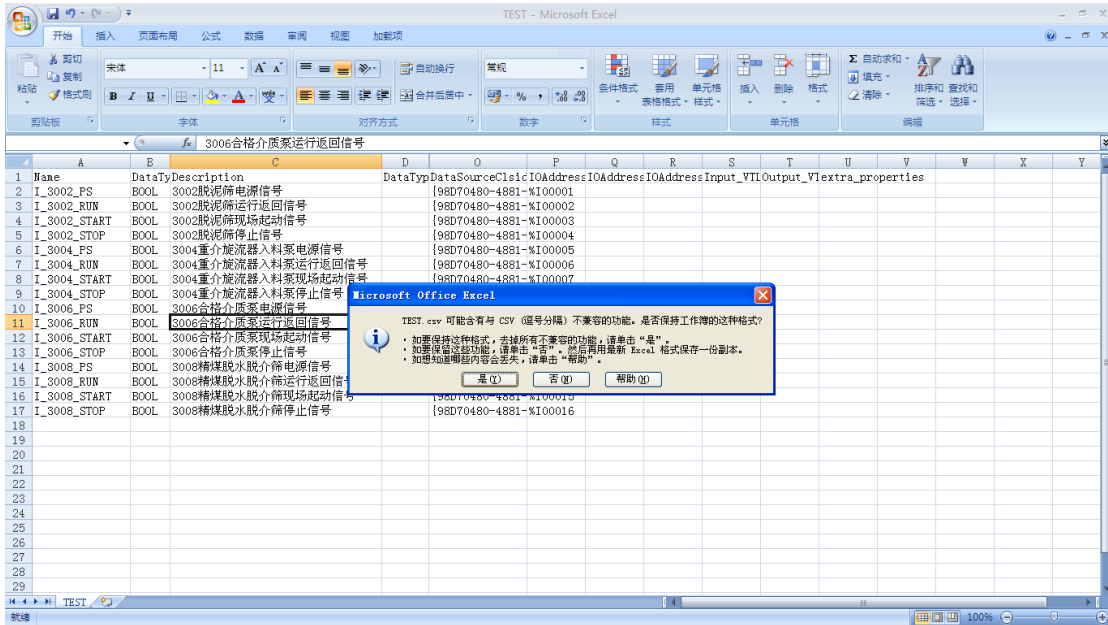
(2) 写入地址和描述，以及地址等信息



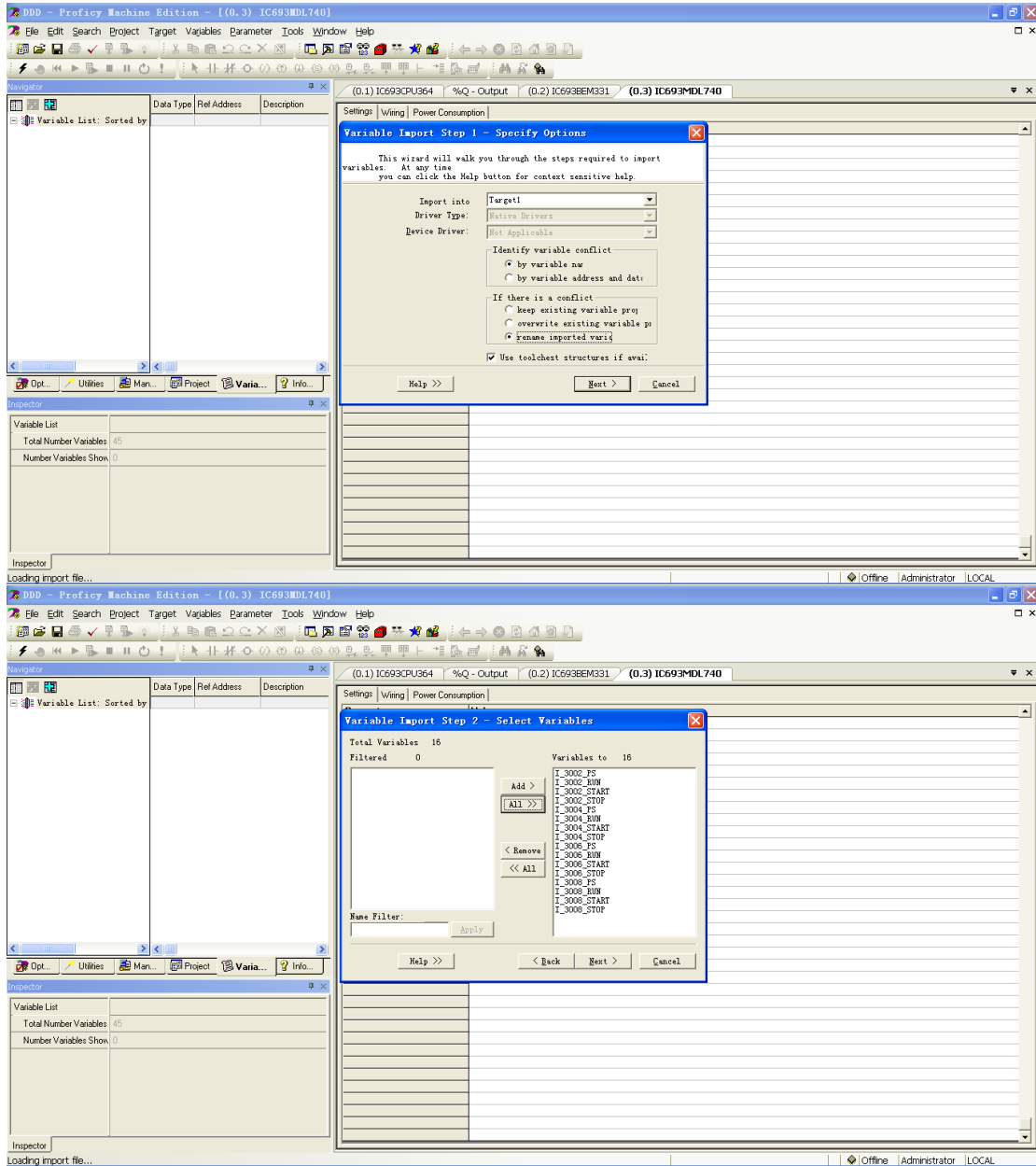
(3) 导出并保存



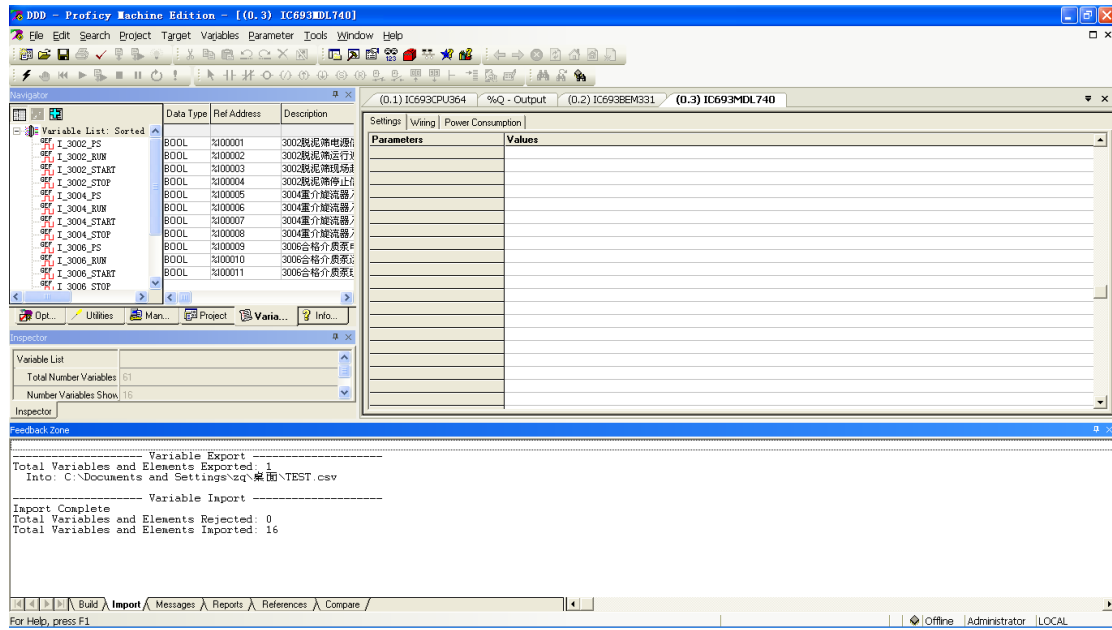
(4) 拷贝点名, 地址, 描述, 并保存



(1) 导入新变量表



(2) 导入成功，此后变量即可在编程时使用



DDD - Proficy Machine Edition - [(0.3) IC693MDL740]

File Edit Search Project Target Variables Parameter Tools Window Help

Navigator: (0.1) IC693CPU364, (0.2) IC693BEM331, (0.3) IC693MDL740

Variable List	Data Type	Rel Address	Description
I_3002_PS	BOOL	%I00001	3002预处理电源
I_3002_RUN	BOOL	%I00002	3002预处理运行
I_3002_START	BOOL	%I00003	3002预处理启动
I_3002_STOP	BOOL	%I00004	3002预处理停止
I_3004_PS	BOOL	%I00005	3004重介旋流器
I_3004_RUN	BOOL	%I00006	3004重介旋流器
I_3004_START	BOOL	%I00007	3004重介旋流器
I_3004_STOP	BOOL	%I00008	3004重介旋流器
I_3006_PS	BOOL	%I00009	3006合格分选器
I_3006_RUN	BOOL	%I00010	3006合格分选器
I_3006_START	BOOL	%I00011	3006合格分选器
I_3006_STOP	BOOL	%I00011	3006合格分选器

Inspector: Variable List, Total Number Variables: 61, Number/Variables Show: 16

Feedback Zone:

```

----- Variable Export -----
Total Variables and Elements Exported: 1
Into: C:\Documents and Settings\zq\桌面\TEST.csv

----- Variable Import -----
Import Complete
Total Variables and Elements Rejected: 0
Total Variables and Elements Imported: 15
  
```

Build Import Messages Reports References Compare

For Help, press F1

Offline Administrator LOCAL